

Water storage opportunity

- Priority locations identified for underground water storage to assist with flood mitigation
- Opportunity to improve drainage through car parks

Car park upgrade

- Upgrade the car park to improve circulation and to maximise the use of space with line-marking
- Include accessible car parking spaces
- Improve accessible path network to and from the car park

Netting

- Install removable protective netting for use during cricket season to protect cars and users of the Knox Gymnastic Centre

Knox Gymnastics Centre and sports pavilion

- Opportunity to re-design entry into the gymnastics centre to improve accessibility
- Investigate opportunities to upgrade facilities including the removal of obsolete infrastructures and provide new planting to improve presentation

Upgrade path network

- Opportunity to create a circuit path around the oval
- Improve connections throughout the Reserve and to the surrounding streets
- Infrastructure, including seating, bins, water fountain and signage, to be installed along the proposed path network
- Remove the site screen and any other unused infrastructure - fences, posts etc. from the south end of the oval to improve presentation from the street
- Improve pedestrian connections from Burwood Highway

Exercise elements

- Opportunity to include outdoor exercise equipment along the circuit path
- Opportunity to include distance markers along the circuit path

Sports lighting

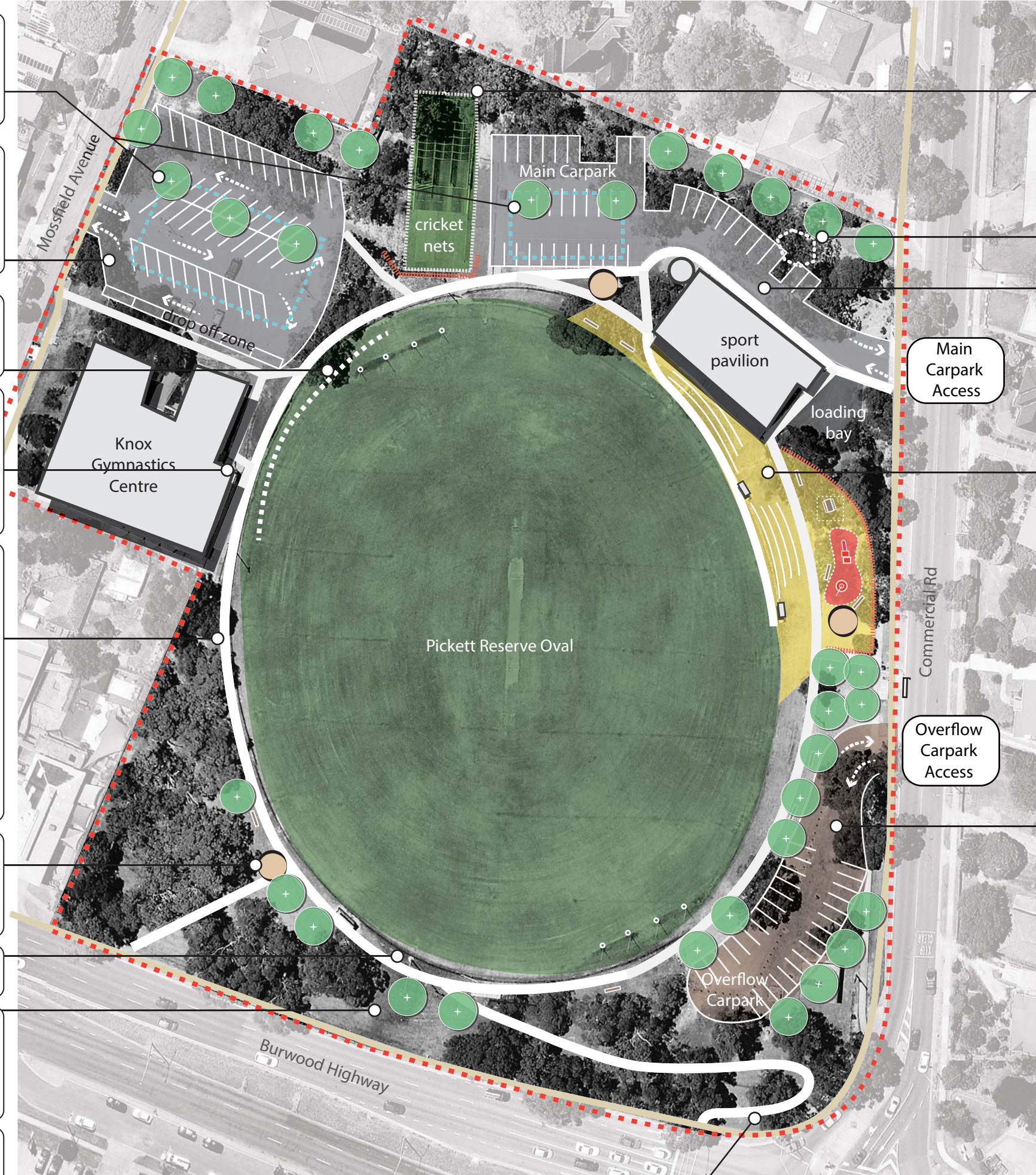
- Upgrade existing sportlighting around oval

Landscaping

- Tidy up existing planting areas including removal of any dead trees to improve sight lines
- Further planting to provide shade along paths and social areas

Reserve entry presentation

- Tidy up the area at the corner of Burwood Highway and Commercial Road including removal of old fencing and replace with new Reserve signage.
- Improve the Reserve presentation along the frontages and establish a stronger sense of presence at the road intersection. Explore opportunities to create ramped footpaths incorporating feature retaining walls and gardenbeds



Cricket nets

- Erect fencing between the cricket net area and the adjacent pedestrian path

Existing playspace

- Demolish the existing play space and develop a new improved play space near the social area
- Opportunity to widen the access track and upgrade the car park
- Additional tree planting along the boundary

Main carpark

- Provide accessible car parking space(s)
- Opportunity to improve access by widening driveway entry

Social area and playspace

- Remove a section of the existing unsealed carpark and replace it with a social area
- The social area to include shelter, picnic tables, seating, BBQ, bins and drinking fountain
- Develop a new play space adjacent to the social area. Investigate the erection of fencing to separate social area and playspace from traffic and the car park
- Provide new terraced seating on the oval embankment
- Maintain vehicle access to the eastern side of the sport pavilion for loading purposes
- Provide accessible paths and connections through the proposed social area

Overflow car park

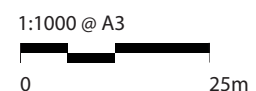
- Retain the existing overflow, unsealed, car park
- Increase the capacity of the overflow carpark to include the area where the existing shelter is located
- Overall, the proposal results in no net loss of car parking. The proposal allows for approximately 115 car parking spaces.
- Provide an accessible pedestrian path from the overflow car park through to the sport pavilion
- Investigate opportunity to widen the vehicular access from Commercial Rd

Legend

Existing building		Underground water storage	
Existing path		Asphalt car park	
Site boundary		Gravel car park	
Proposed path		Proposed playspace	
Vehicle access		Park furniture	
Social area		Proposed tree	
Netting		Proposed fence	
Proposed exercise station		Cricket nets	

Pickett Reserve DRAFT Masterplan

May 2016



getting your comments back to us

If you would like to provide any comments on the proposed works, you can do so by visiting the Knox Council website knox.vic.gov.au and following the links to our Parks and Reserves page, or alternatively:

Email us at
pickett@knox.vic.gov.au

Visit us
Knox City Council
511 Burwood Highway
Wantirna South 3152

Post it to us (free of charge)
Attention: Landscape Team
Knox City Council
Reply Paid 70243
Wantirna South Vic 3152

Call us
9298 8000 and ask for one of the Landscape Team

Hearing and Speech Impaired
Knox City Council is Relay Service Friendly.

If you are deaf, or have a hearing or speech impairment, contact Council through the National Relay Service (NRS) website.

Give the number 03 9298 8000 you want to call. For more information, visit relayservice.gov.au.

Translating and Interpreting Service (TIS)
You can access immediate telephone interpreting services through TIS National by calling 131 450.

where to from here?

Following review of your feedback, a draft masterplan will be produced to guide improvements to the park. We will seek your feedback on the draft masterplan prior to it being finalised.



building a better Pickett Reserve

march 2016



creating a better park

Knox Council is preparing a masterplan to improve Pickett Reserve located at the corner of Burwood Highway and Commercial Road, Ferntree Gully. This bulletin considers ways that Council may improve the park and invites you to share your thoughts.

what is a masterplan?

The purpose of the masterplan is to guide any future management, upgrade and development of the Reserve when funding becomes available.

The masterplan will be prepared by Council through consultation, site analysis of surrounding land uses, and background research on the history of the site.

With your help, Council plans to make the Reserve a better community asset which will reflect the changing needs of the neighbourhood.

our observations

Council has begun its analysis and research on the Reserve and has summarised its observations and preliminary ideas on the Opportunities and Constraints Plan inside this bulletin.

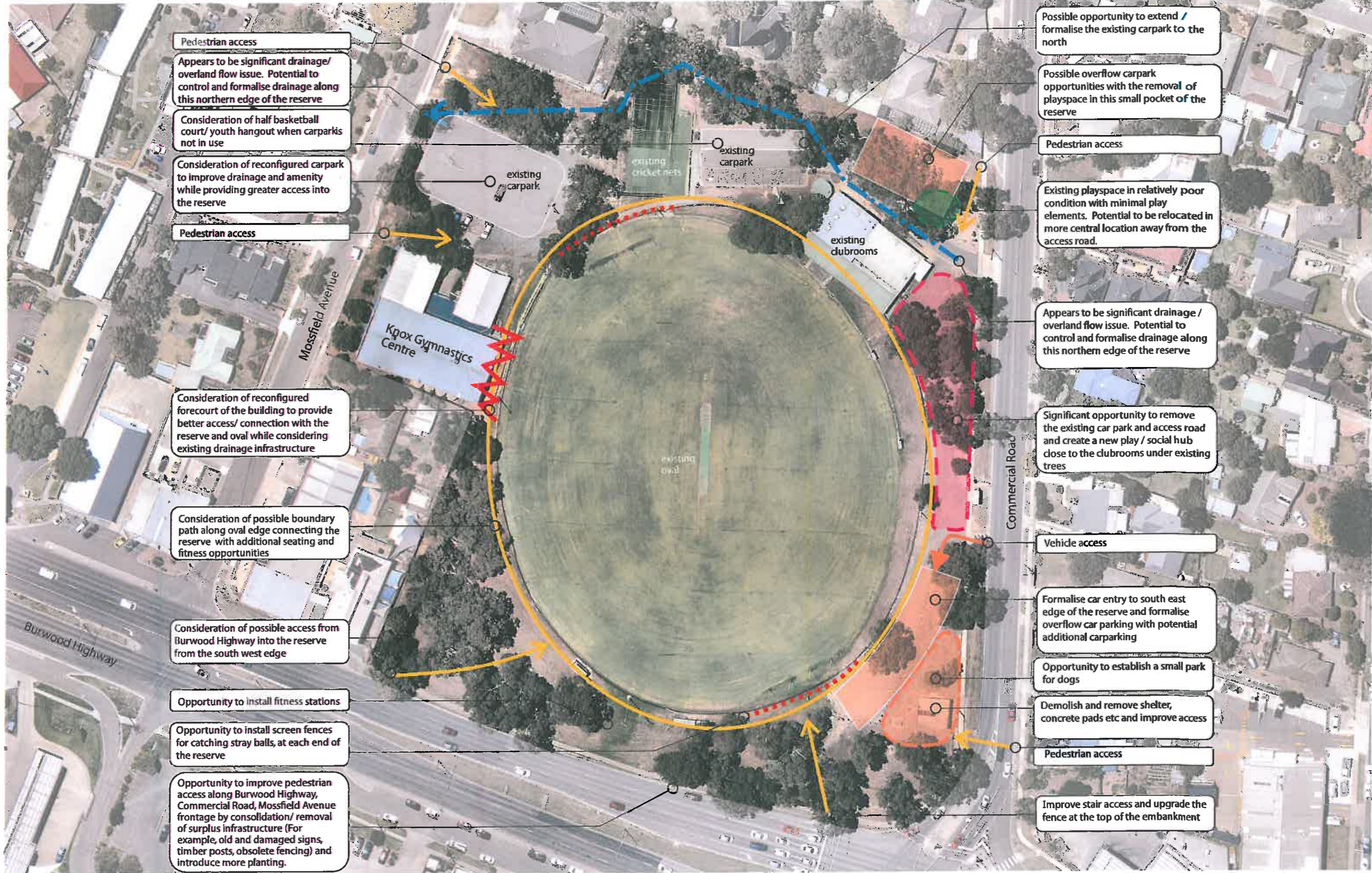
have your say

A community consultation session will be held on **Saturday 19 March** near the playground. Please drop in and have a chat and a **complimentary** hot beverage with Council staff any time **between 10am and 11am**. As a thank you for attending, the first 50 participants will receive a voucher for a free indigenous plant. The voucher can be redeemed at Knox Environment Society Nursery 1010 Burwood Highway, Ferntree Gully (opposite the Ferntree Gully Library).

survey

If you are unable to attend the community consultation session but would like to provide your thoughts, please fill in the survey enclosed and send it to Council by close of business on **Tuesday 29 March 2016**.





Picketts Reserve Masterplan Opportunities & Constraints Plan

DRAFT ONLY FOR PUBLIC CONSULTATION
March 2016

NOTE

- The items identified on this plan are for discussions only.
- This is not the Masterplan. Following your feedback, a Draft Masterplan will be produced. Council will seek your feedback on the draft masterplan prior to it being finalised.

PLACE

1:1000 (A3)





1. What do you like most about Pickett Reserve?

Comments:.....
.....

2. What activities do you use Pickett Reserve for? (tick all that apply)

- Participating in sporting games or practice
Please circle: Gymnastics / Football / Cricket
- Watching a sporting event
- Waiting while my child participates in sports
Please circle: Gymnastics / Football / Cricket
- Walking / jogging / running / taichi
- Exercising dogs
- Place to sit and relax
- Playground / children's play
- Picnics
- Walk to school
- Walk to shops
- I do not visit Pickett Reserve
Because.....

Comments:.....

3. How do you rate the general quality and condition of Pickett Reserve?

- Excellent
- Good
- Reasonable
- Poor
- Unsure / Don't Know

Comments:.....
.....

4. What do you like least about Pickett Reserve?

Comments:.....
.....

**5. Do you have suggestions for improvements you would like to see at Pickett Reserve?
Please list and prioritise. (Suggestion 1 being of highest priority)**

- 1
- 2
- 3

Thank you for providing us with feedback.

This survey folds into a reply paid envelope. Fold and seal the envelope with tape or staples and return free of charge, by post. Please return all submissions by close of business on **Friday 25 March 2016**. If you need assistance please call 9298 8000 and ask for one of the Landscape team.

If you would like to be kept up to date on the project, please provide your contact details

Name

Address

Phone

Email

Privacy Statement

Council is committed to protecting your privacy. Any personal information you share will only be used by Council to process this form. We will not give this information to any other individual or organisation unless required to by law. You may access this information by contacting Council on 9298 8000.

Fold along dotted lines, then staple or secure with tape to make a reply paid envelope.



building a better Pickett Reserve
community survey

No stamp required if
posted in Australia



Attention: Landscape Team
Knox City Council
Reply Paid 70243
Wantirna South VIC 3152

pickett reserve masterplan

consultation summary

April 2016

prepared for



PLA'CE

Introduction

A series of consultation sessions were held during March and April 2016 with the Knox community in the Ferntree Gully area around Pickett Reserve. Robyn and Emma from Playce and Flora and Marshall from Knox City Council facilitated workshops with key stake holders (including the Knox Eagles Junior Football Club, Ferntree Gully Footballers /Cricket Club and Knox Gymnastics Centre) and a community drop in session held on site at Pickett Reserve.

There was also an online presence with a survey and information on the project. Flyers with the 'Opportunities and Constraints Plan' were sent to nearby residents and businesses.

Overall Pickett Reserve is valued by the local community as an open green public space, it is used as a sporting facility for organised sports as well as a park for informal active and passive activities. The oval and sporting facilities are well used and valued with a community focus on improving path networks, parking, amenities and club rooms around the oval. While the existing trees and plantings are valued as a buffer from the busy surrounding roads improvements could be made to the interface between the surrounding streets and Pickett Reserve.

The existing elements within Pickett Reserve – sports oval, existing buildings, play space and landscape elements - are strong building blocks for the future of the reserve, community feedback shows concerns about location of elements within the site, which will be considered in the layout of elements in the Masterplan.

Who was involved

- Knox Eagles Junior Football Club
- Ferntree Gully Footballers /Cricket Club
- Knox gymnastics centre
- Local residents
- Knox City Council - Internal departments including local laws, stormwater, active communities, parks and leisure

Process

The community were asked questions about Pickett Reserve to facilitate a general discussion, these included:

- What do you like most about Pickett Reserve?
- What activities do you use Pickett Reserve for?
- How do you rate the general quality and condition of Pickett Reserve?
- What do you like least about Pickett Reserve?
- Do you have any suggestions for improvements you would like to see at Pickett reserve

Outcomes

The following key themes emerged during the community consultation sessions, which will form the basis of the masterplan.

Community Facilities:

The reserve currently has a broad cross-section of user groups that are actively involved in the reserve. A focus will be to improve facilities for community and sporting groups, including possible upgrades to existing club room buildings and improve car parking during events. Community facilities also include possible upgrade to the picnic and BBQ area, more seating throughout the reserve, potential upgrade to public toilets (accessible, safe and clean), social areas that are safe and for use by different user groups and an upgrade and potential relocation of the play space.

Inclusive Connections and Access:

Internal paths are to be strengthened to existing and future activity areas - picnic area, play space, sports oval, surrounding streets and car parking areas. A key focus will be to create an accessible circulation path around the oval to improve connectivity for pedestrians throughout the reserve and improve accessibility from the street.

Pickett Reserve is in close proximity to Mountain Gate Shopping Centre located at the busy intersection of Ferntree Gully Rd and Burwood Highway, with bus stops nearby along Commercial Rd and Burwood Highway, these all provide important access to the reserve particularly for the elderly and youth. Amaroo Gardens, an aged care facility, is also close by on Burwood Highway. There is currently a broad cross-section of user groups that are actively involved in the reserve. Social and active spaces are the focus for age inclusivity, with flexibility in use and scale of activities, with the outcome to provide spaces which encourage diversity of use by different age groups.

The reserve is also approx 500 metres from the community housing complex at the corner of Burwood Hwy and Dorset Rd. The Reserve is 440 metres from Wattleview Primary School.

Active and Activities:

The community feedback showed that almost half of the activities people were involved in at Pickett Reserve were unstructured active uses - including walking, jogging, dog walking and walking through to shops. Improved path connections (see above), amenities, such as a drinking fountain and park furniture along the path, would also benefit those using Pickett Reserve for unstructured active uses. The potential to include some outdoor exercise equipment was also raised.

Landscaping:

Pickett Reserve is valued in the community for its open green space and trees which offers breathing space within an otherwise built up and busy area. Improved landscaping including additional trees and plantings as well as maintenance work on existing plantings and trees was suggested by the community as a way to improve Pickett Reserve and to provide a more inviting face to the street.

Water Storage:

The location of Pickett Reserve within the water catchment area makes it a potential site to collect and store water to assist with flood mitigation within the water catchment area further downstream.

Some other key comments raised included;

Parking/Traffic:

Community members raised concerns about parking and traffic issues, particularly along Mossfield Avenue and when sporting events or training is on or during peak use times.

Consultation notes

Key Stakeholders

Comments on improving Pickett Reserve.

23rd March 2016 at Pickett Reserve Sports pavilion representatives from Knox Eagles Junior Football Club, Ferntree Gully Footballers/Cricket Club and Knox gymnastics centre were in attendance.

Drainage

- In winter months, the ground on the Burwood Hwy side experiences some drainage issues

Football club

- Existing lights are acceptable for training purposes
- Ferntree Gully Eagles Football Club has 17 teams
- Spectators use the overflow car park along Commercial Rd to watch from their cars. One of our aims is to provide appropriate facilities so people can get out of their vehicles and be amongst the action and socialise, be involved with the club.
- The carpark located nearest to the shelter is considered too far away from the clubhouse for people to park at.
- Footy intending to continue to play junior footy at Pickett. They have 3 girls' teams. Is considering making Pickett a hub for girls footy.
- Possibility for shelter in the northern end of the eastern carpark to establish it as a 'family friendly area'
- Footy don't need nets behind the goals.
- Clubrooms outdated– clubs are aware of the challenges of a rebuild – cost etc
- A terrace in front of the clubroom is in need for upgrade – better to have a wider space so it can be used for other purposes rather than just sitting.
- Clubs future funding focus is on:- Scoreboard, terracing, new coaches box, toilet and showers (upgrade the shower for girls), clubroom floor
- Girls footy is gaining popularity, AFL starting girl game in 2017. More families and female spectators. Potential for Pickett Reserve to become a hub for girls footy
- Coaches box – the new location impacts on the cricket player. If it is moved back a meter it will be ok. May not be possible due to grade of land. Can the coaches box be relocated to the terrace?
- The asphalt located outside the clubroom is steeply graded and dangerous for people in wheelchair.

- On Friday nights, junior game – don't use the whole ground but get many families and spectators – busy, the whole terrace get filled up with people. 50 to 80-people average on a Friday night (12-13 kids on each sides + families)
- Footy night Sunday. They have presentation night average 100-120 people

Parking

- Maintain the number of carparking spaces and rationalise it but not likely to increase the number and footprint. People are our first priority, cars are not.
- Commercial Road car park driveway is too narrow. Should be widened, Circulation in the asphalt car park is tight - causing delay, confusion and congestion.
- Most people use the asphalt driveway rather than the secondary entrance near the bus stop.

Playground

- Playground is in the plan for renewal
- Play space in current location is hidden "back of house"
- A lot of balls get hit onto the northern end of the eastern carpark so this needs to be address if a potential playground location.

Cricket club

- Took 5 years to get the cricket net done
- Conflict around cricket nets with people walking through the cricket practice net area. There is a sign there but it is still very risky. Returns on fence need to be extended at an angle.
- Additional Astroturf for bag storage
- The Cricket Club would like to have nets installed to stop cricket balls going onto the gym carpark and roof (has not spoken to Leisure about it). Cricket club is

aware that nets are 50/50 fund split between club and council

- Cricket not too concerned with the ball getting past the Burwood Hwy side of oval.
- Site screen – no one needs it. Cricket wants to organise a working bee to remove it.
- The box located on the Burwood Hwy side – cricket wants to put the new scoreboard onto the structure.
- Cricket – wants the terrace to be rebuilt.

Knox Gymnastics Centre

- Gym clubs expanding, huge waiting list, 900 membership and 500 on waiting list.
- Monday, Tuesday and Sat are most busy. Thurs and Fri are probably the quietest.
- Gym – carparking spots are in short supply
- Kids from gym do come out for a run on the oval after they have a 4 hour session. Lighting would be welcomed.
- Time-steppers also use the gym facilities.
- School groups sometimes hire the gym facility

Internal Stakeholders

Comments on improving Pickett Reserve.

Monday 21st March 2016 information gathering session held at Knox City Council

Stormwater (Daniella)

- Flooding issues downstream
- Storage important here – one of few open areas with flooding issues downstream and pressure from industry to act- funding opportunities?
- Ground upgraded only 3 years ago (typically approx 15 years lifespan of oval).
- Car parks in need of work – upgrade surface and potential to include underground water storage.
- Treeless area on southern embankment also identified as potential area for water storage.
- Get latest flooding info for area

Gymnasium

- Gymnasium allocated car park, building licence with council – uncertain how much longer they intend to use the building - they are possibly outgrowing this location.
- Lighting added to gym car park last financial year
- Car parking issues - pick up and drop off times very busy – some complaints about speed and traffic entering and exiting car park
- Look at access to the building- currently main access around back of building

Car park

- Accessible car park in each car parking area
- Look at better connections between car parks and pedestrian access paths
- Look at cross function - potential shared use of car park

Football and Cricket Clubs

- Accessible connections to club rooms/oval
- Club looking to expand facilities/ club rooms - heavily used grounds
- Toilets in poor condition – only open match days
- Only footy and cricket clubs use the club rooms currently
- How do people get to and from grounds? Walk? Drive? Public transport?
- Cricket nets recently upgraded
- What elements around the oval are they still using? Sight screen? Score boards? Coack box? What can be removed or upgraded?
- Balls going on road not an issue – junior teams
- Upgrade of flood lights future plan for oval?

Local Schools

- Wattleview school- only use for emergency evacuation
- Do Eastern Ranges School use Pickett Reserve?

Play space

- For local residents, families /parents using oval other facilities
- Outdoor gym near playground
- Picnic tables/bbq / shelter / drinking fountain
- Location? Passive surveillance balanced with distance from busy traffic, noise pollution etc. and pleasant place to be shade etc.

Path network

- Connection to shopping centre/Burwood Hwy
- Loop around oval
- Accessible

Community survey

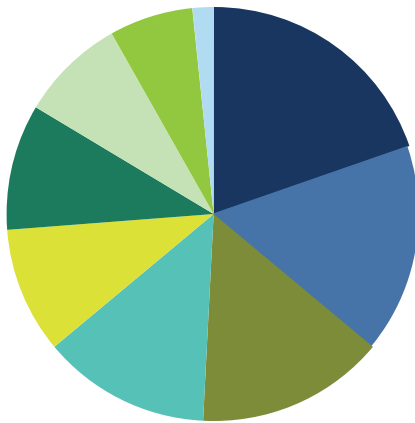
Flyers with the survey and 'Existing Conditions and Opportunities Plan' were sent to nearby residents and businesses.

The community values Pickett Reserve as an open green public space that offers respite from the more built up suburbia that surrounds the reserve. The oval is valued for its use as a place for organised sporting events, informal exercise, dog walking and more passive recreation.

What do you like most about Pickett Reserve...?

- Fireworks at end of footy year
- Nice oval to fly kite or play kick to kick
- As an open public space with trees and nature amongst healthy activities in a world of more and more density living
- the oval
- a quiet green area with some trees
- convenience for surrounding property occupiers
- place to exercise and walk the dog
- the playground
- open area
- t's easy walking distance from my home
- it's location
- A lovely spot to sit and look towards the city
- Can be seen from the road -seems safer because it's open for walking around

What activities do you use Pickett Reserve for...?

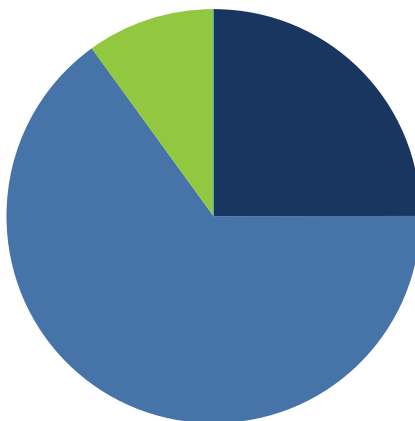


- walking/jogging/tai chi (12)
- walking to the shops (10)
- place to sit and relax (9)
- excersing dogs (8)
- participation in sports games or practice (6)
- playground (6)
- waiting while my child participates in sports (5)
- watching sporting events (4)
- I don't visit Pickett Reserve (1)
- Picnics (0)
- Walk to School (0)

Further comments regarding use of Pickett Reserve...

- I don't visit Pickett Reserve because I'm older
- Pickett reserve is well used
- It often has a lonely atmosphere

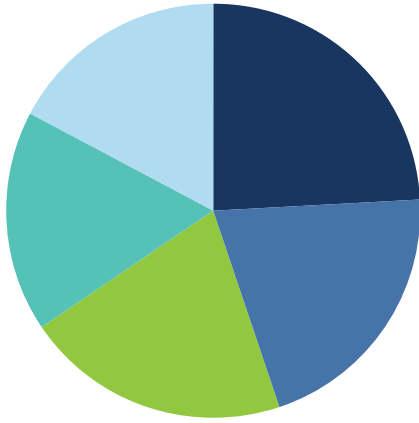
How do you rate the general quality and condition of Pickett Reserve...?



- excellent (0)
- good (5)
- reasonable (13)
- poor (2)
- unsure/don't know (0)

Further comments on quality and condition of Pickett Reserve...

- oval is fantastic but remainder of reserve is underwhelming
- as a neighbour I would not like too many changes to the reserve - I like it as it is. I would like the playground maintained and parking extended away from residents homes
- path from Commercial Rd to Mossfield Ave is rough and uneven
- there is minimal graffiti and vandalism
- it's dusty
- graffiti on club rooms and stands around oval
- buildings need an upgrade
- parking needs to be addressed



Do you have any suggestions for improvements you would like to see in Pickett Reserve...?

- more park furniture (7)
- upgrade playspace (6)
- improve landscaping /more trees and plantings (6)
- better path connections including curcuit path around oval (5)
- improved car parking/ more car parking spaces (5)

There were many suggestions around more seating throughout the reserve including places to watch sporting events. Other key suggestions included an upgrade to the play space, improved landscaping throughout the reserve, better path connections including a circuit around the oval, improvements to car parking in Pickett Reserve and upgrading sporting club facilities like club rooms, score boards and change rooms.

Further suggestions for improvements you would like to see at Pickett reserve...?

- modernise undercover bbq area
- install public toilets
- more tables and seating throughout the Reserve
- more trees and plantings/improved landscaping
- a new and attractive fence along Burwood Hwy
- upgrade children's play equipment for the young families in the area
- install a fence around the play space
- dog friendly areas- fenced with dog water bowl
- regular clean up and rubbish removal after events
- stop kids climbing on top of the cricket nets
- no basketball courts or active play near residents – noise concerns
- a concrete pedestrian path around outside of the oval
- a clean drinking fountain
- more and better parking
- improved signage listing facilities
- excersise park (outside)
- fix drainage issuses
- install new scoreboard/remove any old and unused infrastructure from around oval
- new/updated club rooms
- girls change rooms
- umpire rooms
- removal of dead trees and branches

The main issues raised were around parking and traffic concerns particularly around congestion on Mossfield Avenue during events. Other issues raised were around maintaining a clean and welcoming Reserve and improving amenities including public toilets and club rooms.

What do you like least about Pickett Reserve...?

- lack of carparking (particularly during sporting events)
- parking along mossfield ave during events
- lack of toilets
- build up of rubbish
- close to busy traffic
- doesn't have a welcoming atmosphere
- graffiti
- old structures at Burwood Hwy end of reserve an eye sore
- the fireworks- scare animals, unnecessary, wasteful
- cricket/football clubs don't maintain space- leave rubbish
- no girls change rooms in the club rooms

Community Drop in day

Comments received from community at Pickett Reserve drop in day.
Saturday 19th March 2016 held at Pickett Reserve

Parking /Traffic issues

- People parking on Mossfield Ave and surrounding streets particularly during events causing congestion
- Danger entering /exiting the gymnasium car park
- Suggest access from Mossfield Ave into reserve is closed
- People parking in garden beds, playground etc. during events
- Cars getting bogged in winter
- Access from car park around reserve an issue. Need for accessible connections from car park to club rooms, oval, paths...
- Improve/ formalise car parking
- Concerns regarding access to and from Commercial Road
- Concerns regarding congestion of Burwood Highway / Commercial Road intersection

Drainage issues

- Concerns about stormwater running into neighbouring houses / yard
- Car park gravel washes onto road

Cricket nets

- Kids climb on top of nets/ throw things into neighbouring yards
- Noise from cricket nets bothers neighbours

Active play

- Want active play away from residents- no basketball hoop, rebound wall near residents
- Playground and basketball hoop location suggested corner of Commercial Rd and Burwood Hwy

Dog Park

- Designated/fenced dog off-lead area suggested
- People use the oval for a fenced in dog exercising area- they negotiate with other users/ footballers to use the space

Path Network

- Access through/ around oval
- Make existing/new paths accessible
- Stairs in poor condition
- Access for parents and kids to gymnasium around back - side access for admin/staff only.
- Improve access from Burwood Hwy/ steep gradient

Landscaping

- Don't want any existing trees to be removed
- Improved maintenance of existing plantings

Other Comments

- Leave the park alone – fine how it is.

What's next

Based on the feedback and suggestions received, Playce in collaboration with Knox City Council will develop a Draft Masterplan, which will provide a vision for the future of Pickett Reserve.

Once a Draft Masterplan has been prepared, it will then go out to the community for feedback and suggestions. The design team will revise if required and detail documentation will begin.

The Masterplan will look at the site in stages to be built over the next five plus years pending funding approval.