

Knox Community Arts Centre Technical Specifications

Last Updated: 08/03/2021

Contents:

Stage & Dimensions	02
Lighting	03
Audio	07
Projection	09
Communications & Visuals	10
Backstage	11
Venue Floorplan	12
Standard Lighting Plan	13



Knox Community Arts Centre, Corner Mountain Highway & Scoresby Road, Bayswater, 3135
Phone: 9729 7287, Email: arts@knox.vic.gov.au, Website <https://www.knox.vic.gov.au/kcac>

Stage & Dimensions

Stage Summary:

Unraked stage with a proscenium arch and apron. Concrete Slab covered with Masonite sheets and painted black. Screwing into the stage surface is permitted (subject to authorization). Larger holes must be authorized prior to booking in consultation with Venue Technician (Repair costs may apply). Stage crossover is via backstage dressing room area.	
Stage Distributed Load Limit:	500Kg/m2
Stage Point Load Limit:	N/A
Stage Rake:	No

Stage Dimensions

Proscenium Width:	8.50m Proscenium Height: 2.95m
Setting Line:	Upstage edge of Proscenium, to allow for fire curtain.
Stage Measurements:	Setting Line 4.72m, Centre Line 2.36m
SL to DS edge of apron:	1.43m
SL to rear wall:	4.72m
Overhead Obstructions:	Lighting Bars are 3.95m above stage. CYC bar is 3.87m above stage
Full Stage Dimensions	Length 6.27m x Width 8.68m

Auditorium

2.60m rise over 9 rows with one aisle on each side. Space to accommodate 2 wheelchairs.	
Stage Level:	1.07m above auditorium floor
Maximum Seating Capacity (Seating bank):	172
Maximum Seating Capacity (Flat Floor):	100
<i>*10 Round tables each with 10 seats around each. Rectangle tables also available by arrangement.</i>	

Flying Facilities

Total Number of Lines:	3 x LX Bars, 1 x CYC Bar (All motorized)
Panorama Lines:	0
Batten Type:	JANDS JLX - Lighting Bars- CYC bar is 50mm O/D Alloy Pipe
Batten Length:	9m
Batten Extensions:	No
Batten Pickups:	4
Fly Line and Bar Safe Working Load (SWL)	500kg

Draperies

House Curtain:	Royal Red Velvet 2 x 4.35m x 3.00m @ 80% Fullness
<i>*Please note that the house curtain is hand pulley (French Action). Control is Prompt side.</i>	
Legs:	(All 50% Full) 4 @ 2.5m x 5m
Borders:	(All 50% Full) 2 @ 9.00m x 1.00m
Midstage Tabs:	2 @ 6m x 5m, positioned midstage
Cyclorama:	White, 8.30m x 3.80m
<i>*Please note that Legs cannot be rotated.</i>	

Access Equipment

Ladders:	1 x 2.4m Aluminium single sided A-Frame Ladder 1 x 1.8m Aluminium Platform Ladder 1 x 3.6m Aluminium Platform Ladder
-----------------	--

Loading Dock

<p>The Loading Dock is located directly behind the stage. It has access to stage via access door (PS), or via rolling stage door (PS off Centre).</p> <p>Loading access is via the carpark entrance on South side of building. Dedicated car / truck parking is located directly outside this door.</p> <p>Piano must be moved onto stage before any equipment can be loaded through the doors.</p>	
Loading Dock access via ramp from carpark:	1.4m (W)
Loading Dock Height:	3.37m Door Dimensions: 3370mm (H) x 2800mm (W)

Lighting

On-Stage Lighting Bars

3x	On-stage Electrics bars @ 9m long, JANDS JLX Bars
1x	On Stage CYC bar against rear wall, 9m long 50mm OD pipe
12x	Dim/GPO circuits per bar (evenly distributed)
2x	DMX 5-pin patches per bar
<p><i>*All bars are fixed in their position and cannot be swung</i> <i>*5-3pin adaptor available on request</i></p>	

FOH Lighting Bar

1x	6000m long, 48mm O/D pipe
6x	Dim circuits
6x	GPO circuits
1x	DMX 5-pin patch:
SL to FOH Bridge:	5.82m @ 55 deg
<p>Access via Platform Ladder. <i>*4 Rows of seating bank must be removed for ladder access</i> <i>*5-3pin adaptor available on request</i></p>	

FOH Perches (PS & OP)

4x	Dim/GPO circuits (vertically placed)
<p><i>* Perches are vertical</i> <i>* Max 3 Dimmable channels with outlets on each side</i></p>	
Maximum Fixtures per perch:	2

Other LX DMX Patching

1x	DMX 3-pin: DSPS at Stage Managers desk
1x	DMX 5-Pin: Backstage PS in Loading Dock
<p>Multiple CAT 6 patch points are installed throughout venue, and can be utilized to route DMX throughout building via CAT 6 to DMX Adaptors.</p>	

Dimmer/Distribution

The Dimmer Bay for the theatre is located in the loading dock area, directly behind the stage. All lighting bar patches run patch board next to the dimmers and can be sub patched.	
3x	Dynalite Pro Pak 2.4Kw 12ch
Total Number of Dimmers:	36 x Dimmer/Hot Power Outlets
<i>*All Dimmer/Distribution channels can be changed to suit all applications</i>	

Other Power

2x Single GPOs	2 (1x on upstage wall, 1 on OP side wall)
2x Double GPOs	2 (1x DSPS near Stage Manager's Desk, 1x DSOP)
3x 32A	4 (Dimmer Bay currently used for Dimmer/Distribution, Stage Manager's Console)

Consoles

Lighting Desk:	MA onPC Command Wing
Control Channels:	2048 parameters
Signal Output:	DMX512
Signal Distribution:	DMX512 4 way splitter onstage 1x DMX 5-pin PS side of stage 1x DMX 5-pin PS backstage (at dimmers) 5x DMX 5-pin – 3pin adapters available

House Lights

Fixtures:	Fluorescent batten lighting in roof. Controllable via Dynalite panel (on/off) 2 x Wall mounted 500w floodlights
Stand-Alone Control:	Available from the Stage Manager's Desk or bio 100%, 75%, 25%, 0% presets Fixed Fade Time - 3 sec

Conventional Fixtures

Make	Model	Purpose	Beam Angle	Accessories	Wattage	Total
Prolite	PR7	Profile	22 – 40	Gel frame Shutter set	650w	4
Prolite	PR10-F	Wash	7 – 63	Gel frame Barn Doors	1000w	8

LED Fixtures

Make	Model	Purpose	Beam Angle	Specifics	Wattage	Total
GTD	LMZ1512 Wash Zoom Moving Head	Moving Wash	7 - 45	RGBW	12 x 15w	10
Chauvet	Slimpar Pro Hex	Stage Wash	41	RGBWAUV	12 x 10w	15
Chauvet	Ovation C-640FC	Cyc Wash	45	RGBWA	5w	6
Chauvet	Ovation F-915FC	Front Wash	17 - 54	RGBAL	3w	11
Chauvet	Ovation E-260WW	Profile	25-50	Warm LED	230w	7
Chauvet	Ovation E-930VW	Profile	25-50	RGBOLR	3w	4
Chauvet	Freedom Stick	Effect	N/A	RGB	35w	8
Chauvet	Colorband H9	Effect	29	RGBWAUV	Battery	6
Chauvet	Freedom Flex H4 IP X6	Effect	23	RGBWAUV	Battery	6
Chauvet	120ST LED	Follow Spot	14 - 20	7 separate colours	120w	1

Atmospherics

Make	Model	Type	Specifics	Wattage	Total
DJ Power	VenueHaze 1150	Hazer/Smoke	DMX, Auto Interval	1150w	1

Audio

Control Positions

Bio Box:	Located above the rear of the auditorium, standard location for house console
Other:	Other locations by arrangement only.

Consoles

Allen & Heath SQ7 Digital Console (Primary)	48 input channels (40 mono, 3 stereo) 12 Busses. 3 Stereo Matrixes. 8 FX engines. 16 assignable mute groups. 7" touch screen. 33 Faders. iPad control
Allen & Heath QU24 Digital Console (Backup)	26 input channels (24 mono, 1 stereo) 12 busses. 4 DCA Control Groups, 4 Mute Groups, 4 Group Outputs, 2 Matrix Outputs. 4 FX busses. 5 inch touchscreen. iPad Control.

Stage Rack

Audio Rack:	Located PS Stage Managers Desk Allen & Heath AR24/12. 24 IN, 12 OUT, Monitor Out
Audio Rack:	Allen & Heath AB1608 - 16 In, 8 Out

FOH Speakers

QSC K12.2 Active Speakers	2x (Left and Right)
KV Ex 2.2 Active Subwoofer	1x (Located DSC, under stage)

Monitors

DB Technologies Opera 12 600w	6
KX 12 Active Speakers	2

Microphones

Make	Model	Details / Accessories	Total
Shure	SM57	Dynamic Instrument Mic	4
Shure	SM58	Dynamic Vocal Mic	6
Rode	M5	Cardioid Condenser Mic	8
Sennheiser	E904	Tom Mic with Clip	3
Sennheiser	E902	Drum Mic	1
Shure	819	Surface Mount Mic	2
Beyerdynamic	MCE 85 BA	Shotgun with wind sock	1
Sennheiser	G3 100 Series Wireless	Radio Mic Receivers	4
Sennheiser	100 Series 845 capsule	Handheld wireless Microphone	4
Jag	IM-5	Directional Headset Microphone	4
Chiayo	Performer Live-100 Series	Radio Mic Receivers	2
Chiayo	Headset Mic	Skin Tone headset	2
Chiayo	Lapel Mic	Clip/head mount	2
Peak	DI Box	Single Active DI	5
Radial	USB DI	USB to Balanced XLR Interface	1
Hosa	Pro-Conex Little Bro SH-8X0-50	8-way analogue stage box	2

Stands

K&M Short Boom Stand	3
K&M Tall Boom Stand	12
Straight Stand (Black)	2
Music Stands	5

Orchestral

1x	Schimmel K189 Concert Grand Piano <i>*Stored in Loading Dock when not in use</i>
----	---

Projection

Projectors

<p>Theatre:</p>	<p>Epson EH-TW6700 digital projector Full HD 1080P Resolution 3000 Lumens Fitted with variable zoom lens Projector is mounted on FOH lighting bar HDMI only with USB-C and Mini Display Adaptors</p>
<p>Function Room:</p>	<p>Epson PT-AX100E digital projector HD 1280 (WXGA) Resolution 2000 Lumens Fitted with variable zoom lens Projector is mounted on Supper Room Roof and focused onto electric screen. HDMI only with USB-C and Mini Display Adaptors DVD Player/Stage feed inputs available</p>

Projection Surface

<p>Cyclorama Cloth:</p>	<p>9m x 4m</p>
<p>Function Room Screen:</p>	<p>2.4m x 1.5m</p>

Play-Back Equipment

<p>Sony Blu-Ray Player</p>	<p>1 in theatre</p>
-----------------------------------	---------------------

Communications & Visual

Stage Manager's Desk

Located DSPS, facing onstage (Cannot be moved)	
1x	Desk Lamp
1x	Comms Master Station
1x	House LX Control
1x	Curtain Control (Manual Pulley)
2x	9" LCD Screens (Mounted on front)
1x	24" LCD Screen Camera Feed (Mounted on Wall)

Talk-Back System

Master Unit:	Jands E101
Total Sub Stations:	5 x E101 Beltpacks (Single Channel)
Total Headsets:	5
Talk-Back Patching Locations:	3x Bio (Audio, Lighting and Projection) DSPS (SM Desk) DSOP

Camera Feeds

Stage Camera:	Starvis Bullet 2MP IP/SDI Camera Mounted in Auditorium in front of Bio
Portable Conductors Camera:	Gator Butterfly G30CL Mounted on Mic Stand, can be patched throughout building via CAT6
Venue Cameras:	DOSS Dome AHD 1080P SDI Camera Mounted in Green Room, Onstage, Loading Dock, Foyer & Supper Room

Monitors

Bio:	2 x 24" LCD (DVR Feed & Conductors Feed)
DSPS (SM Desk):	2 X 9" LCD (Conductors Feed & DVR) 1 x 24" LCD (Stage Feed)
DSOP:	1 x 24" LCD (Stage Feed)
Loading Dock:	1 x 40" LCD (Stage Feed)
Green Room:	1 x 40" LCD (Stage Feed)
Dressing Rooms:	2 x 32" LCD (Stage Feed)
Foyer:	1 x 40" LCD (Stage Feed)
Auditorium:	1 x 40" LCD (Conductors)

Backstage

Dressing Rooms

Dressing Room	Toilets	Details
Dressing Room 1	1	Wash Basin & Mirror
Dressing Room 2	1	Wash Basin & Mirror

Laundry / Wardrobe

Laundry Facilities:	None available
Wardrobe:	2 x Clothes Racks

Wi-Fi

Free Internet	Yes – Unsecured Network, T&C acceptance required
----------------------	--

Green Room

The Green Room is located next to the Backstage Loading Dock. It can be used as a production office by arrangement. The room can be curtained off from stage door entrance. The Function Room can also be made available as Green Room for larger groups by arrangement.

Tea / Coffee Facilities:	Yes, by arrangement
Fridge/Freezer:	No, however function room kitchen is available on request
Microwave:	No, however function room kitchen is available on request

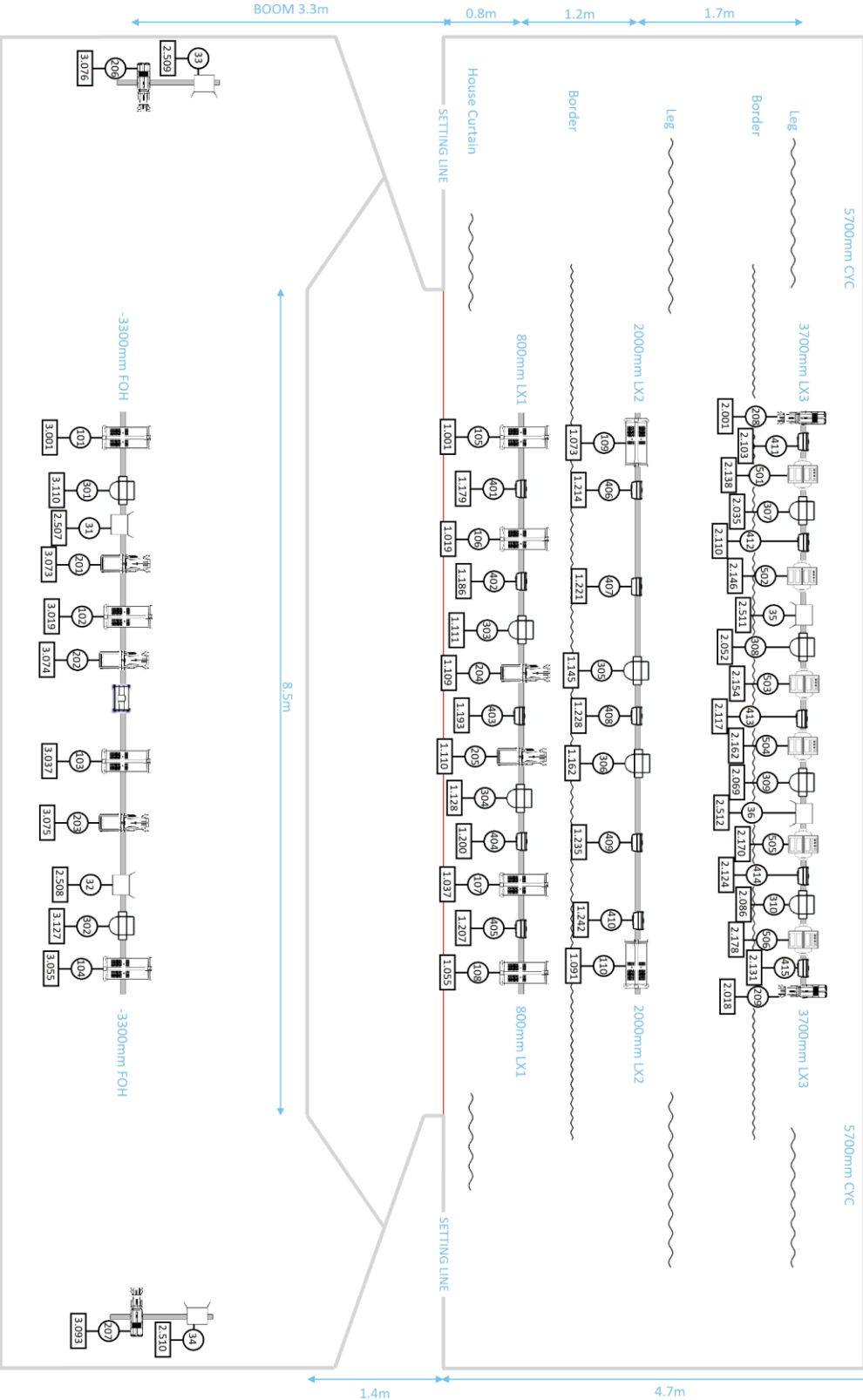
Stage Door

Stage Door located between loading bay doors and the main lobby entrance, entering into the Green Room which can be curtained off. Door unlocked from access times.

Venue Floorplan



Standard Lighting Plan



* Not to Scale. Measurements to be used as a guide

KCAC Standard LX Plan