

Green Areas & Rural Strategy Visioning Consultation

Submissions
close
22 April
2020

Are you interested in the future of Knox's green and rural areas?

We invite you to have your say on opportunities for 5 precincts that have environmental and landscape significance in Knox. This brochure provides key findings from our preliminary analysis and presents a selection of the identified opportunities and priorities for each precinct. The full set of project findings and background reports are available on the Knox website at knox.vic.gov.au/gars

By having your say, you can help Knox Council determine if we've got the balance and priorities right. Your feedback will help Knox Council develop the Knox Green Areas and Rural Strategy, and set a long-term vision and strategic directions for each precinct.

The 5 precincts in Knox:

Precinct 1: The Basin Rural Landscape

Precinct 2a: Lysterfield Valley and Hills

Precinct 2b: Lysterfield Quarries and Surrounds

Precinct 3: Dandenong Creek Valley Precinct

Precinct 4: Healesville Freeway Reservation and Surrounds

The project seeks to gather an evidence base and develop a stronger understanding of the values and potential of these precincts. The project aims to guide the planning framework and provide future strategic directions to protect and enhance the environmental and social values of these precincts, while realising compatible land use potential (such as tourism, recreational and agriculture potentials).

To have your say on the opportunities identified, be sure to make a submission by 22 April 2020. *Details on how to make a submission can be found on the back cover.*

About the 5 Green Areas and Rural Precincts in Knox

The study area (refer to map below) is predominantly used for rural, conservation, open space, recreation and agriculture purposes. Protecting the significant biodiversity, enhancing what is valued, and exploring new opportunities for each precinct is highly important for ongoing environmental, economic, cultural, and wellbeing outcomes.



Precinct 4
Healesville Freeway
Reservation and
Surrounds

The precinct contains a corridor of land reserved for a possible extension of the Healesville Freeway. Dandenong Creek and its riparian vegetation line the northern edge of this precinct and connect with significant native bushland.



Precinct 1
The Basin Rural Landscape

Known for its beautiful natural landscapes and high ecological integrity, The Basin Rural Landscape Precinct is located on the edge of the metropolitan urban growth boundary, and nestled in the foothills of Dandenong Ranges National Park.



Precinct 3
Dandenong
Creek Valley
Precinct

The Dandenong Creek Valley is a consolidated open space and biodiversity corridor lying between the Dandenong Creek and EastLink.



Precinct 2a
Lysterfield
Valley
and Hills

Forming a south-eastern gateway to Knox, the Lysterfield Valley and Hills precinct is a highly valued landscape of open pastoral character providing for agriculture and rural living



Precinct 2b
Lysterfield Quarries
and Surrounds

The precinct covers popular recreational and tourism destinations in the Lysterfield and Churchill National Parks and is home to a variety of wildlife species. The precinct also contains hard rock quarries that support the construction industry across Victoria.

Check out the interactive map at knox.vic.gov.au/haveyoursay and search to see if your property lies near or within a precinct

Draft Vision

The Precinct will support healthy ecosystems, including waterways and wildlife habitat, and highly valued landscapes, while allowing for sustainable agriculture, rural living, tourism, recreation and community uses that are sited and designed to support these values.

The Basin Rural Landscape

Tell us what is important in Precinct 1 - here are some of the opportunities we have identified:

Landscape and Character

- 1 Protecting the topography including the open character of the Dobsons Creek valley, rising to the eastern and western vegetated hilltops
- 2 Protecting long range views from Basin-Olinda Road and Mountain Highway towards the valley and foothills
- 3 Maintaining the open area to the north of the Basin roundabout to maintain key long range views

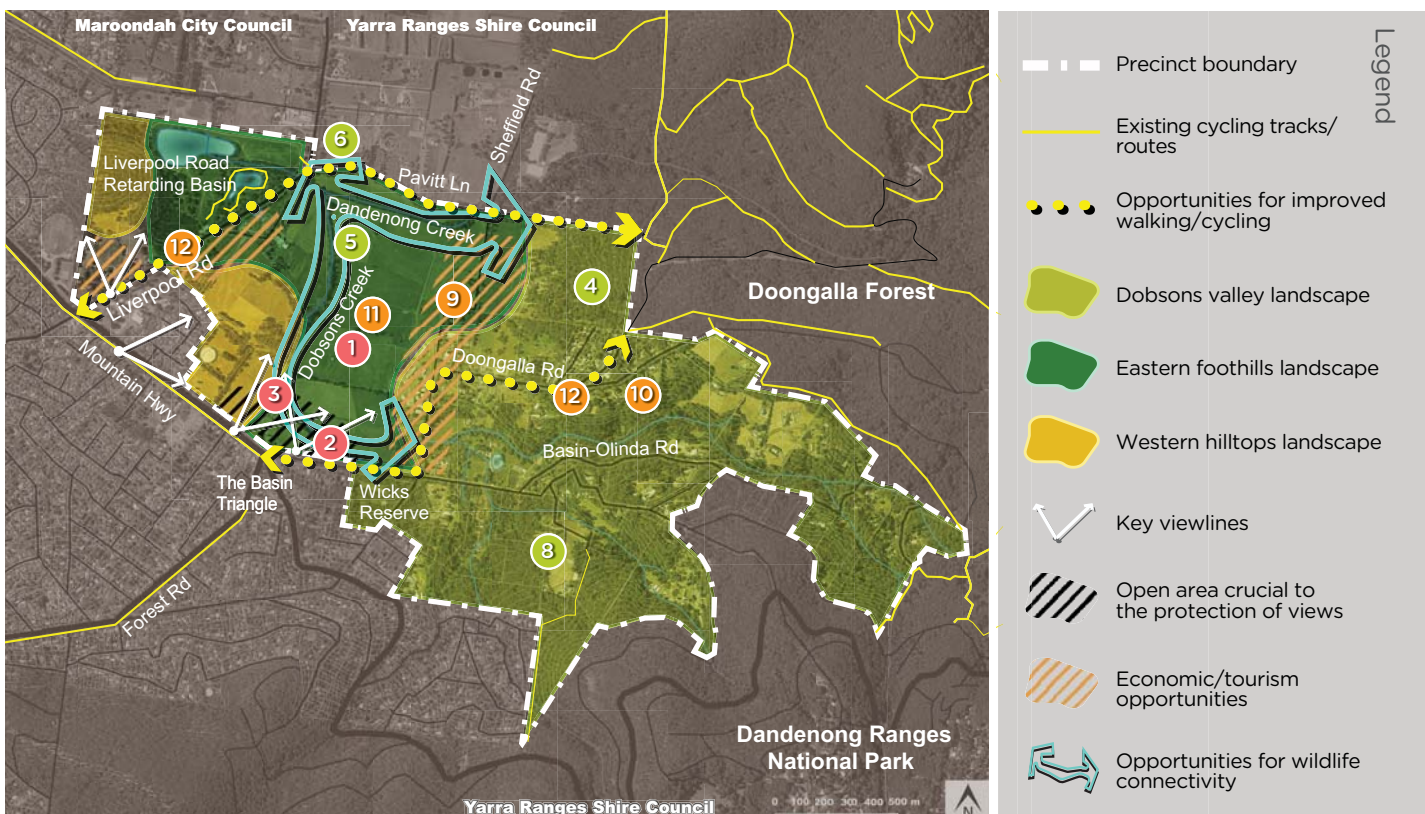
Ecology

- 4 Protecting and enhancing native vegetation and waterways, including Dandenong and Dobsons Creeks
- 5 Improving wildlife connectivity along the creeks by limiting development and supporting habitat restoration within a 200m buffer

- 6 Minimising the barrier effect of Liverpool Road and Dobson Lane for wildlife connectivity along Dandenong Creek
- 7 Encouraging water sensitive design principles for buildings and infrastructure
- 8 Ensuring any new development addresses bushfire risks, while protecting existing vegetation

Land Use and Access

- 9 Supporting tourism and other economic opportunities in locations that do not compromise the environmental and landscape values
- 10 Maintaining the amenity of the existing residential properties
- 11 Protecting the agricultural and flood management role of the Dobsons Creek valley
- 12 Enhancing walking and cycling access for residents in The Basin to existing recreational opportunities in Doongalla Forest



Draft Vision

The precinct is a distinct landscape of natural and pastoral character which supports agriculture, rural industries and lifestyle living, while contributing to flood management, water quality and wildlife connectivity.

Lysterfield Valley and Hills

Tell us what is important in Precinct 2a - here are some of the opportunities we have identified:

Landscape and Character

- 1 Protecting the landscape features including the Lysterfield ridgeline and the open valley character on either side of the ridgeline
- 2 Protecting views from vantage points along Napoleon Road and Wellington Road, by preventing intense development that would obstruct or dominate the views
- 3 Maintaining the existing minimum subdivision sizes which have contributed to the current landscape character

Ecology

- 4 Enhancing the riparian corridor of Monbulk Creek and strengthening wildlife habitat and connectivity within a 200m buffer
- 5 Should the proposed Dorset Road Extension be progressed by the State Government, advocating for a design of water sensitive,

multi-modal road/pedestrian and wildlife connectivity corridor

- 6 Reducing the wildlife barrier effect of the road crossings over Monbulk Creek
- 7 Ensuring the protection of Monbulk Creek environmental values and floodplains
- 8 Encouraging land management practices to better protect habitat values on grazing land

Land Use and Access

- 9 Protecting agricultural land including within the floodplains of Monbulk Creek
- 10 Supporting tourism, agri-tourism and restaurant/café uses that protect the agricultural, environmental and landscape values of this precinct
- 11 Improving access for Knox residents to Lysterfield National Park including shared path connectivity to its bike tracks as well as a new formalised entry point via Cornish Road or Powells Road



Draft Vision

The precinct will protect significant vegetation and wildlife habitat, provide high quality recreation and tourism opportunities and support the economic values of the existing extractive industries.

Lysterfield Quarries and Surrounds

Tell us what is important in Precinct 2b - here are some of the opportunities we have identified:

Landscape and Character

- 1 Recognising the significant landscape values of Lysterfield and Churchill National Parks due to their native bushland condition and natural integrity
- 2 Further investigation of heritage sites within Lysterfield Park and consideration of areas of Aboriginal cultural heritage sensitivity
- 3 Any future changes to the quarries (including post their operational life) to consider the impact on important views, including from lookouts within Lysterfield Park

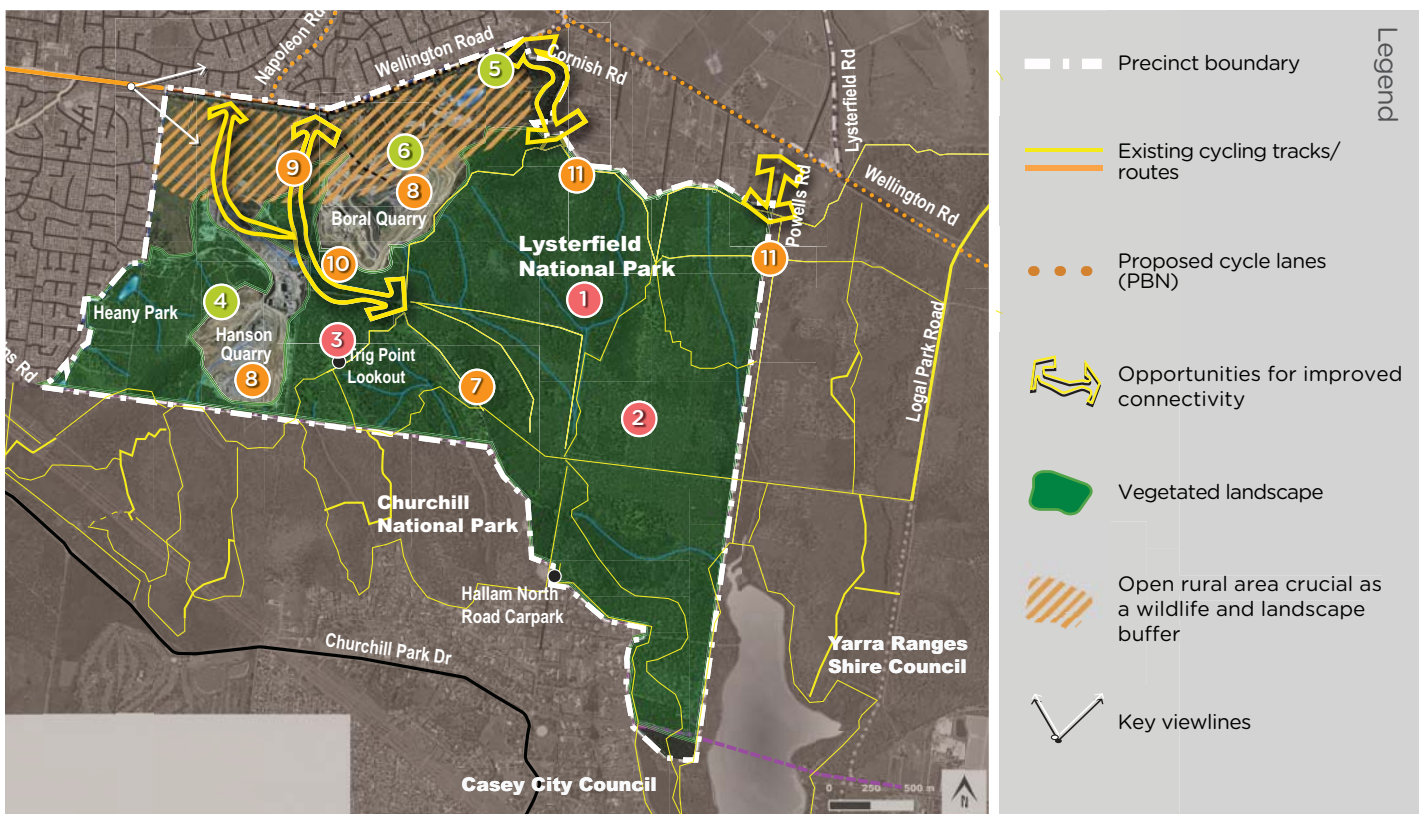
Ecology

- 4 Maintaining and strengthening wildlife linkages to important bushland and habitat areas within Lysterfield and Churchill National Parks through vegetation/revegetation where possible

- 5 Maintaining the current Urban Growth Boundary at Wellington Road which is crucial to the protection of environmental and habitat values within the precinct
- 6 Protecting the area south of Wellington Road as a rural buffer between the urban areas and sensitive habitat in the national parks

Land Use and Access

- 7 Enhancing nature tourism and recreational opportunities in Lysterfield Park including mountain biking in proximity to the urban area
- 8 Supporting the economic role of the two hard rock quarries which supply important construction material to the broader region
- 9 Opportunities for open space, recreational and sporting facilities
- 10 Providing shared path connectivity to the national parks from within Knox
- 11 Investigating a new formalised entry point with car parking, from either Cornish Road or Powells Road, to improve access to the national parks from within Knox



Draft Vision

The precinct will act as a consolidated “green lung” corridor within the Eastern Metropolitan region providing considerable recreational, nature conservation, flood mitigation, urban agriculture and parkland opportunities.

Dandenong Creek Valley Precinct

Tell us what is important in Precinct 3 - here are some of the opportunities we have identified:

Landscape and Character

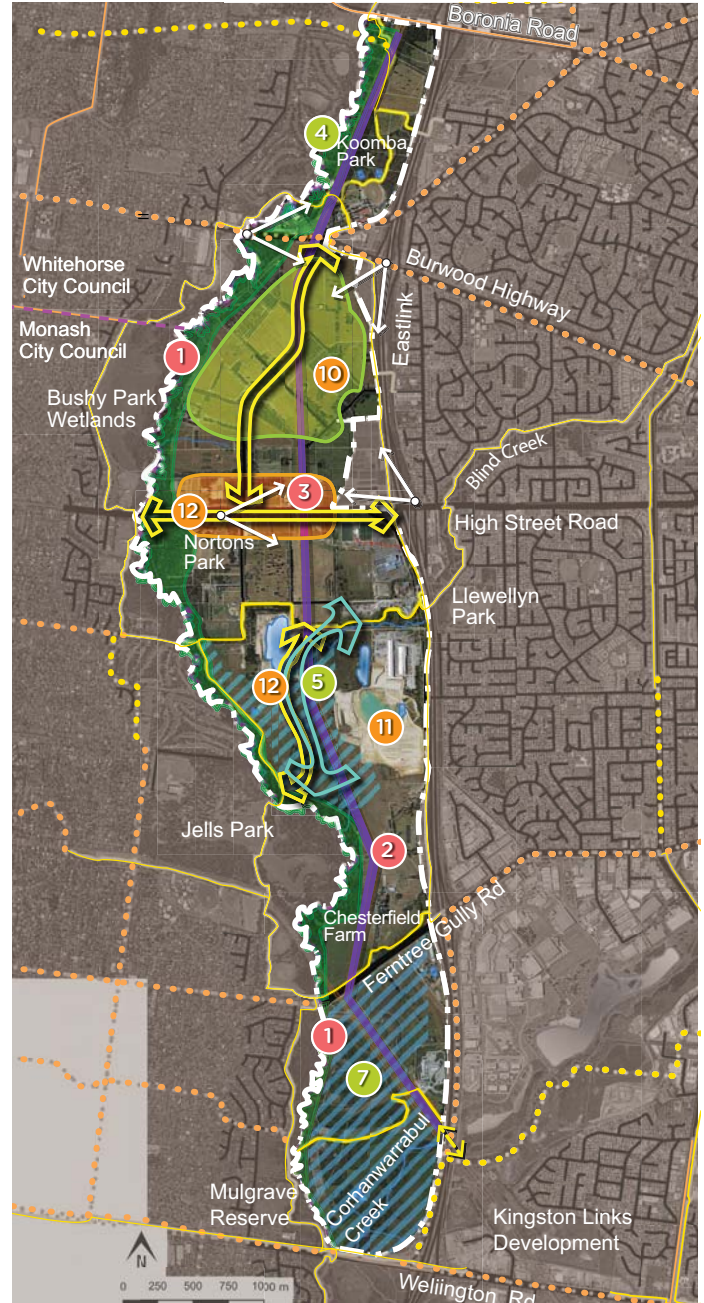
- 1 Protecting the Dandenong Creek riparian corridor as an integrated landscape element and a corridor of Aboriginal cultural sensitivity
- 2 Protecting the existing vegetation and landscape elements that reduce the visual dominance of the high voltage power lines
- 3 Protecting the character of High Street Road as an entry corridor to Knox with strong rural, horticultural qualities

Ecology

- 4 Protecting the riparian vegetation of Dandenong Creek and minimising development and revegetation within a 200m buffer
- 5 Re-establishing and re-vegetating Blind Creek as a natural waterway and wildlife corridor
- 6 Reducing the barrier effect of roads for wildlife movement along the creeks
- 7 Protecting the billabongs and wetlands that assist with flood management, water quality and habitat for aquatic species
- 8 Encouraging water sensitive and ecologically sustainable design approaches to development and infrastructure

Land Use and Access

- 9 Protecting existing horticultural, agri-tourism, food production, educational and cultural activities
- 10 Enhancing the recreational function of this precinct. In particular, reviewing the areas used for grazing/horse agistment to enable usable open space and recreational uses with improved accessibility.
- 11 Boral Quarry is a strategic site with future residential potential. There are opportunities for nature conservation and passive recreation in the western part of this site between Dandenong Creek and Blind Creek.
- 12 Opportunities for shared path connectivity along High Street Road and along the future re-aligned Blind Creek



Legend

- | | |
|--|---|
| Precinct boundary | Land with opportunities for new parkland and recreation use |
| Existing cycling tracks/routes | Cultivated, horticultural character corridor |
| Proposed cycle lanes (PBN) | Floodplains (indicative) |
| Proposed shared lanes (PBN) | Opportunities for enhancements to Blind Creek as a waterway and wildlife corridor |
| Opportunities for improved walking/cycling | Key viewlines |
| High voltage powerlines | |
| Dandenong Creek conservation corridor | |

Draft Vision

The need for the freeway is to be reviewed by VicRoads in the context of the broader traffic network. Should the road not be required, the precinct offers opportunities for an integrated open space/parkland corridor which protects native vegetation.

Healesville Freeway Reservation and Surrounds

Tell us what is important in Precinct 4 - here are some of the opportunities we have identified:

Landscape and Character

- 1 Maintaining the openness of the area to the south of the Dandenong Creek which enables the creek's natural green corridor to be visible from the surrounding area
- 2 Protecting the Bateman Street Bushland as a highly valued landscape of intact and significant native vegetation
- 3 Maintaining the character of the Wantirna Road cutting as a natural and leafy place within the urban setting

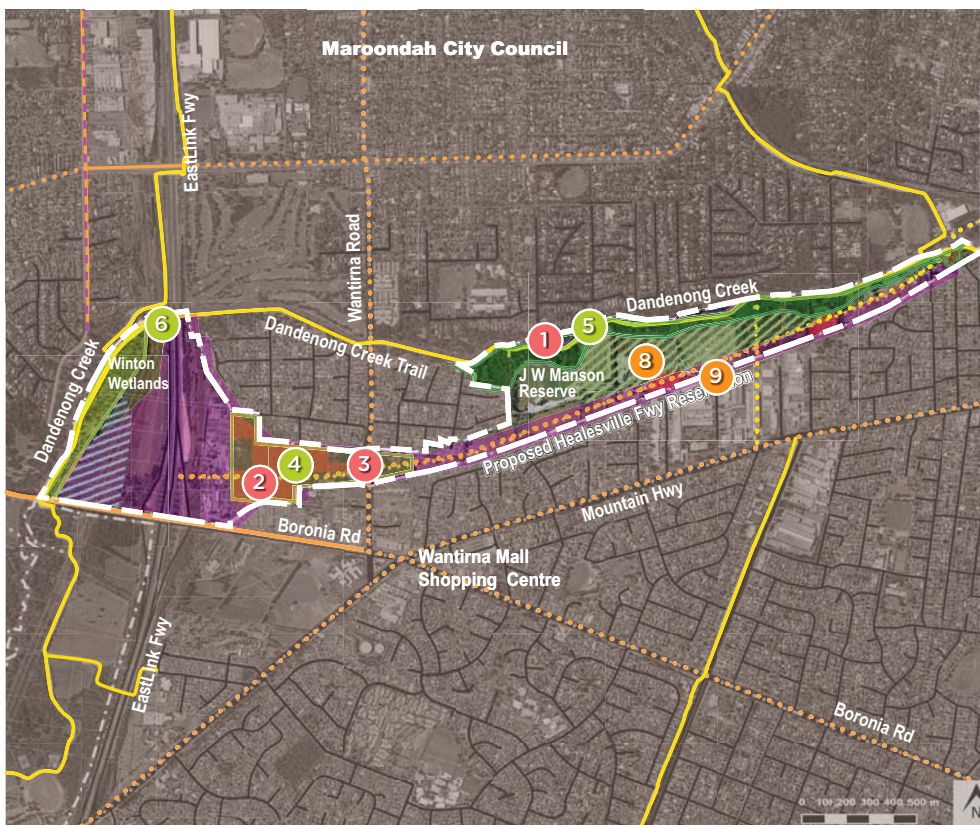
Ecology

- 4 Protecting the Bateman Street Bushland, which is located on the reservation corridor. This bushland is recommended for conservation zoning in the event the freeway is not required. Should the freeway be required, an underpass design to be investigated by VicRoads is recommended to protect this bushland.

- 5 Protecting the significant environmental values of Dandenong Creek and its riparian vegetation which has been enhanced by previous wetland building and habitat restoration by community groups and Councils. Supporting further enhancements within 200m of the creek.
- 6 Reducing the barrier effect of EastLink for wildlife connectivity along Dandenong Creek
- 7 Encouraging water sensitive design approaches to development and infrastructure

Land Use and Access

- 8 Opportunities for the consolidation of land and comprehensive planning for the area to the south of the creek to enable more usable open space and parkland and possible complementary uses, with improved access. Should the Freeway not be required, the reserved land could be amalgamated with this parkland corridor.
- 9 Opportunities exist for small scale urban agriculture due to good soils



Make a submission

Have your say by making a submission by **Wednesday 22 April 2020**.

Tell us your views on the proposed opportunities identified for the study area. We want to know if we've got the balance and priorities right.

To make a submission, you can either:

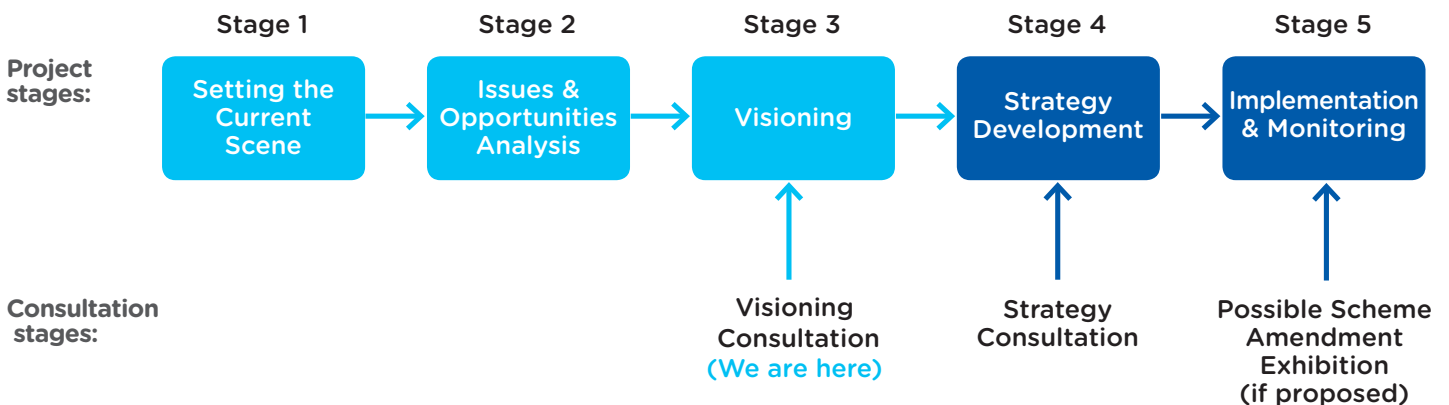
- Complete the online survey at knox.vic.gov.au/haveyoursay (A survey has been set up for each precinct)
- Send a written submission marked 'Submission for Knox Green Areas and Rural Strategy - Visioning' by:
 - Email to: gars@knox.vic.gov.au
 - Write to: City Futures, Knox City Council
Reply Paid 70243
Wantirna South VIC 3152

Submissions will be used for developing the Knox Green Areas and Rural Strategy and may become public or be used to inform public documents. For full details on how your personal information will be used and/or managed visit knox.vic.gov.au/gars

For more information

- More detailed information about the project, including background technical reports, are available from the Knox Council website at knox.vic.gov.au/gars
- Hard copies of the project documentation are available for inspection at:
Knox Council Civic Centre, Customer Service Building and Planning Counter
511 Burwood Hwy, Wantirna South VIC 3152
Weekdays 8:30am to 5pm

If you have questions about this community consultation, email gars@knox.vic.gov.au or call 9298 8000.



Knox City Council
511 Burwood Highway
Wantirna South, VIC 3152
knox.vic.gov.au

T 9298 8000
E knoxcc@knox.vic.gov.au
f [knoxccouncil](https://www.facebook.com/knoxcc)
t [knoxcc](https://twitter.com/knoxcc)
@ [knoxccouncil](https://www.instagram.com/knoxccouncil)
Interpreter
131 450
National Relay Service
133 677



The maps in this brochure are not to scale and are conceptual drafts for the purpose of consultation only. No responsibility or liability is taken by Knox Council in respect to inaccuracy, errors, omissions or for actions based on this information.

