

KNOX
your city

Access Key

Updated February 2020 V1.0



Knox Festival 2020

Saturday 29 February 10am-9pm

Sunday 1 March 10am-5pm

Wally Tew Reserve, Ferntree Gully

Free Community Event
knox.vic.gov.au/knoxfestival



Contents

Guidelines	3
Communication Board	4
Did You Know?	5
Accessibility Features	6
Parking	7
Entry	8
Staff and Assistance	9
Toilets	9
Changing Places	10
Toilets	11
Sensory Garden - Chill Out Hub	12
Food Court	13
Kids Hub	14
Global Kitchen	15
Basketball Half Court	16
Community Stage	17
Ocean Mysteries	18
Other Programs	19
Saturday Evening Twilight Program	20
Safety	21

Glossary

AFFL - Above Finished Floor Level
MLA - Master Locksmith Access Key
TGSI - Tactile Ground Surface Indicators
FTG Library - Ferntree Gully Library



Guidelines

Thank you for choosing to use an Access Key for Knox Festival 2020.

For your Access Key to be successful, we recommend you follow these guidelines:

- Access Keys are available online to help you prepare for your visit in advance.
- Access Keys be read and shared in an environment free of distractions.
- Access Keys can be read independently or shared with a friend, family member, carer or support worker to prepare for the visit.
- If sharing the Access Key with participant, help participant comprehend key points, consistently monitoring for level of understanding.
- If sharing the Access Key with participant, contextualised photographs can be used to summarise information and experiences.
- If using the Access Key as a reflective tool, make sure to enjoy the pivotal link between experience and recall after the visit has taken place.
- Once the visit has taken place, revisit the Access Key to celebrate success.
- Accessibility information is located on page 6.
- Safety information is located on page 21.
- Download Access Key in its entirety - 21 pages in total.



**Access
Ability
Australia**

Access Keys are designed and developed by AccessAbilityAustralia.

To view the full range of free Access Keys available, go to [AAA Library](#).
For Access Keys in Braille or audio, please [Contact Us](#).
Please complete our short [survey](#) to help us ensure continuous improvement.

Access Keys
.....unlocking
your world!



© AccessAbilityAustralia, All Rights Reserved. 2020 DISCLAIMER: All materials have been compiled from information available at time of production. They are not intended to replace professional advice including; but not limited to, access audits. All necessary care has been taken to design and produce Work(s). Full implementation guidelines are supplied in accordance with Work(s) in its entirety. You acknowledge and agree that you are using all services and facilities provided by AccessAbilityAustralia at your own risk and you agree to defend, indemnify, save and hold AccessAbilityAustralia harmless from any and all demands, liabilities, costs, losses and claims, howsoever suffered, including but not limited to legal fees that may arise directly or indirectly from any service provided or agreed to be provided by AccessAbilityAustralia. You agree that this indemnification extends to all aspects of the Work(s), including but not limited to implementation and usage. AccessAbilityAustralia are indemnified of all claims, liability, and expenses that may arise from use of Work(s) as per usage and acceptance of these terms and conditions. This Access Key is not to be altered by any parties without express permission of AccessAbilityAustralia.



COMMUNICATION BOARD

Take your Knox Festival 2020 Communication Board with you to ensure confident communication.
February 2020, V1.0

Changing Places



Toilets



Map



Food



Drinking Fountain



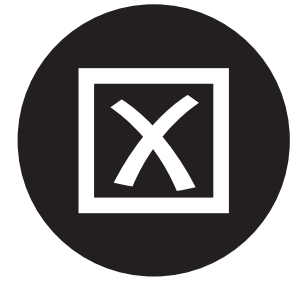
Quiet Place



Yes



No



Phone



First Aid



I need Help

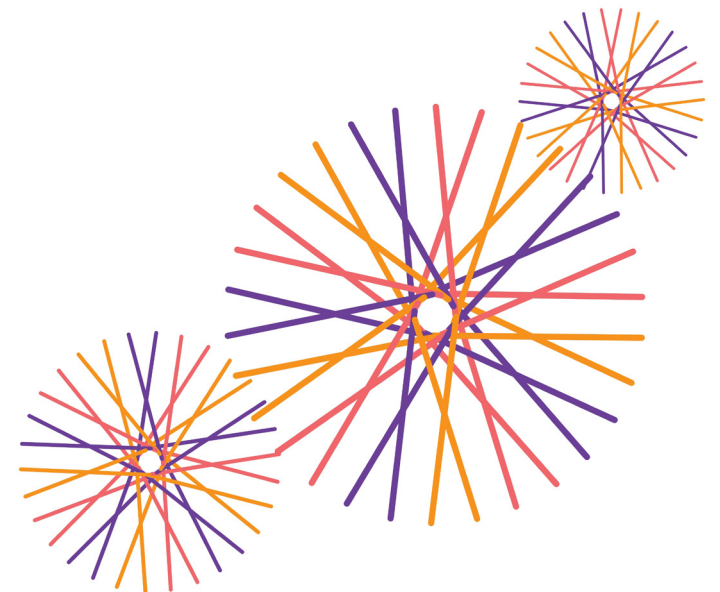


Write it down



Did You Know?

- Knox Festival 2020 is held at Wally Tew Reserve, Brenock Park Drive, Ferntree Gully.
- Gates open on Saturday 10am - 9pm and Sunday 10am - 5pm.
- Entry into the event is free of charge.
- Knox Festival 2020 is a community festival where you will find fun for all ages and abilities. Packed with heaps of activities including community and market stalls, delicious food trucks, all day stage entertainment, games space and lots of free interactive and creative fun for the whole family.
- Please click [here](#) to view Knox Community Access and Equity Implementation Plan 2017 - 2022.
- Event Information Hub located in the Food Court near Event Control.
- Free Shuttle Bus - loops from Ferntree Gully Station to the event - [download the bus timetable](#).
- Bike parking will be available near Lyndale Court. Please bring your own bike lock.
- To see what's on at the Knox Festival, download a program of events [here](#).
- Knox Festival 2020 is a drug, alcohol and smoke free event.
- Follow us on [Facebook](#).
- To provide feedback please email events@knox.vic.gov.au.



Accessibility Features



Knox Festival 2020 welcomes patrons of all abilities and we are keen to support a great event day for all, by providing the following accessibility features:

- Event Information Hub for all event enquiries located in the centre of the event site. Staff will be available here to provide information including accessibility information, large print information, maps, stage programs and helpful directions. Staff are also available to read information if required.
- A visual Communication Board is available at the Event Information Hub to support confident communication.
- Identification wristbands will be available at the Event Information Hub. Wristbands will include parent phone numbers to assist in child safety at this large-scale event. This Hub will also be the collection point for lost children.
- Accessible amenities in FTG Community Arts Centre, Wally Tew Reserve and Event Control. A permanent [Changing Places](#) is also available in Wally Tew Reserve.
- Accessible car park is located via the Burwood Highway entrance.
- New accessible pathways have been added to the event site to link up existing pathways and improve site accessibility.
- A Sensory Garden - Chill Out Space is available for creative and calm comfort for those seeking respite from the busy crowds.
- Knox Festival 2020 is a pet free zone so please leave your animals at home. Assistance animals are welcome.
- Wayfinding signage for key event features displayed as large signs and in colourful teardrop banners.
- Protection from weather in FTG Library.
- A variety of seating options throughout from bench seats, seats with backrests, seats with back and armrests and picnic style tables.
- Spaces for a person using a wheelchair to sit with friends.
- An accessible gated playground.
- If requiring telephone access, please go to the Event Information Hub and ask to use the event mobile.
- Interpreter service available at Knox City Council. Please call the Translating and Interpreting Service (TIS National) on 131 450 and ask them to telephone Knox City Council on 03 9298 8000. Opening hours 8:30am-5pm - Monday - Friday.
- Knox City Council is Relay Service Friendly. Go to Relay Service and give the number 03 9298 8000 you want to call.
- If you have any queries prior to the event regarding accessibility please call the Festival and Events team on 9298 8000 or email events@knox.vic.gov.au.

KNOX Festival 2020

Celebrating Community Life

Saturday 10am - 9pm (stay for dinner, tunes and amusements as the sunsets over Wally Tew)
 Sunday 10am - 5pm

- | | |
|--------------------------------------|--|
| 1 Kids Hub (Free Amusements) | 11 Community Stage |
| 2 Kids Stage | 12 Main Hub |
| 3 Kids Cooking & Composting | 13 Council Engagement Hub |
| 4 Global Kitchen | 14 Ocean Mysteries & Oceanic Art Project |
| 5 Sustainability Hub | 15 Youth Hub |
| 6 KES Nursey | 16 B-Ball Half Court |
| 7 FTG Arts Play | 17 Food Court |
| 8 FTG Library Activities | 18 Canopy Stage |
| 9 Sensory Garden - Chill Out Space | 19 Active Hub |
| 10 Primary School Banner Competition | 20 Amusements |

Free event

Shuttle Bus Stop
 Shuttle Bus loop from Ferntree Gully Train station every 20 minutes
 Sat 10am - 8.50pm
 Sun 10am - 4.50pm

Please note:
 There is no general parking available at the festival. Accessible parking is available via Burwood Highway gate.



For more information visit knox.vic.gov.au/knoxfestival



Parking

Parking is limited - where possible please walk, ride or take public transport to the event.

Accessible parking will be available within the reserve. There will be approximately 30 bays.

Entry and exit for accessible parking will be via the Burwood Highway entrance.

Accessible parking will be open for patrons to come and go at any time throughout the event.

There will be access path connections throughout.

A drop off point will be located on Brenock Park Drive for quick 2-minute drive through access, also ideal for taxis and accessibility patrons. Please be guided by our traffic attendants.

For information on how to get to Wally Tew Reserve, visit Public Transport Victoria.

Entry

Gates will open at 10am and entry is free.

Pedestrian entry can be made through three different gates:

- Lyndale Court.
- Brenock Park Drive.
- Burwood Highway accessible parking area.

An Event Information Hub is available for all event enquiries. It will be located in the centre of the event site. This hub also provides key programming and other helpful information to all patrons.

It will be open daily from 10am - 9pm on Saturday and 10am - 5pm on Sunday.



KNOX
your city

Knox Festival 2020

Free event

Saturday 29 February 10am-9pm
Evening Program, 5pm - 9pm: stay for dinner, music, amusements and to watch the sun set over the Canopy Stage.

Sunday 1 March 10am-5pm
Wally Tew Reserve, Ferntree Gully

knox.vic.gov.au/knoxfestival

MSF SPORTS Knox City Council

Sensory Guide

Knox Festival 2020



Feel
Change in ground surfaces
Shared personal space
Uneven ground
Weather



Sounds
Announcements
Entertainment (loud)
Music
People
Traffic



Sights
Bright flashing lights
Crowd movement



Smells
Food/Drink
Nature
Sunscreen

Staff and Assistance

Knox Festival event staff wear Knox City Council t-shirts and some staff also wear high visibility vests.

Event staff will be happy to give you directions, answer questions and direct you to the Information Hub for more information.

Security Guards wear a black uniform with high visibility vests.

St. John Ambulance Australia (Victoria) will have a first aid station located alongside Event Control.

St. John Ambulance Australia (Victoria) first aid staff wear a jumpsuit with the medical cross visible on their back.

Victoria Police will be on-site. They wear a navy uniform with high visibility vests.



Changing Places

Changing Places toilets have extra features and more space to meet the needs of people with severe and profound disabilities.

Location: Within Wally Tew Reserve, near the library.

Includes:

- Unisex, fully accessible toilet and adult change facility.
- Door clearance of 950mm.
- Cubicle space 3650mm x 4740mm.
- Grab rails wall mounted behind.
- Wall mounted fold down grab bar fitted to either side of the toilet.
- 1 x adult change table - electronically height adjustable foldable table - Max load 200kg.
- CHS Healthcare Ceiling lift system & Stellar 440F hoist with max load 200kg.
- 1 x washbasin with lever operated tap.

Please remember to bring your own sling and ensure it is compatible with hoist. If there is any uncertainty, please do not use hoist.

Entry method: To access the Changing Places, you will require the MLA key.

Alternatively, eligible users can borrow a MLA key from the FTG Library or the Event Information Hub.

Also includes:

- Separate unisex, accessible toilet.
- Automated sliding door. Door clearance 800mm with easy-to-operate internal door lock.
- Grab-bar on wall beside toilet.
- Separate male and female toilets.
- Baby change area (within female toilets).



Sensory Guide

Knox
Festival 2020



Feel
Heating/Cooling
Shared personal space



Sounds
Automated door
Echo
Hand dryer
People
Toilet flushing
Water running



Sights
Bright lights
Mirror/Reflection



Smells
Bathroom smells
Disinfectants

Amenities

At Knox Festival, there are three sets of toilets.

Set 1

Location: Ferntree Gully Community Arts Centre, located nearest to the accessible parking entrance.

Includes:

- Unisex, accessible toilet.
- Manual door opening inward. Door clearance of 900mm with easy-to-operate internal door lock.
- Cubicle space 3270mm x 1880mm.
- Grab bar on wall to the left and behind toilet.
- Toilet seat with colour contrast and height at 460mm AFFL with left-hand transfer.
- Separate male and female toilets.
- Baby change area (within the accessible toilet).

Set 2

Location: Wally Tew Reserve toilets, located in the centre of the event site.

Includes:

- Separate accessible toilet with an automated sliding door and an 800 mm door clearance, easy-to-operate internal door lock and grab-bar on wall beside toilet.
- Separate male and female toilets.
- Baby change area (within female toilets).

Set 3

Location: Event Control.

Includes:

- One unisex, accessible toilet (via lift access).
- Separate male and female toilets.
- Parent Room.



Sensory Guide

Knox Festival 2020



Feel

Change in ground surfaces
Heating/Cooling
Shared personal space



Sounds

Announcements
Echo
Hand dryers
People
Toilet flushing
Water running



Sights

Bright lights
Mirror/Reflection



Smells

Air Freshener
Bathroom smells
Disinfectants

Sensory Garden - Chill Out Space

The Sensory Garden - Chill Out Space will provide a quiet, outdoor sensory garden where children and festival patrons can take respite and relax away from the busy crowds of the festival. It will be located behind the Ferntree Gully Community Arts Centre, near the playground.

The space will feature a range of sensory based toys and activities including;

- Visual sensory pod
- Auditory sensory pods including 'The Quiet Cave'
- Snuggle pods
- Olfactory sensory pod
- Tactile sensory pod
- Gentle water/sound play wall
- Large sensory puddles
- Large floor pillows.



Sensory Guide

Knox Festival 2020



Feel
Gentle Water
Sensations
Shared personal space
Weather



Sounds
Gentle instruments
People
Water running



Sights
Kaliendoscope patterns
Vibrant colours



Smells
Fragranced oils
Sunscreen

Food Court

A Food Court will be located near the Canopy stage.

It will be open daily from 10am to 9pm on Saturday with bands on the canopy stage in this area until 9pm; and 10am to 5pm on Sunday.

Food vendors will sell a variety of food including cultural cuisines, sweets, healthy and snack foods, as well as beverages including water, soft drink, tea and coffee.

Most food vendors will accept EFTPOS and all will accept cash. An ATM will be available next to the Event Information Hub.

An accessible water station is located outside the Wally Tew Reserve toilets in the centre of the event site. A second water station will be located near the Food Court.

Picnic tables and chairs will be available.



Sensory Guide

Knox Festival 2020



Feel
Shared personal space
Warmth from stoves/trucks
Weather



Sounds
Cooking sounds
Festival sounds
People
Wrappers crinkling



Sights
Bright flashing lights
Crowd movement



Smells
Food/drink
Sunscreen

Kids Hub

A Kids Hub will be located to the left of the Ferntree Gully Community Arts Centre.

It will be open daily from 10am to 5pm.

It will include the fun skilled Kids Stage featuring some of the youngest Knox talent, free inflatables and games, interactive performers and more.

Some age/height restrictions may apply for the inflatables and amusements. Restrictions will be signed.



Kids Hub is FREE!




Sensory Guide


Knox Festival 2020



Feel
Shared personal space
Weather
Weightlessness



Sounds
Applause
Blowers/Equipment
Crowd cheering
Festival sounds
People



Sights
Moving inflatables/Rides
Ride movement
Vibrant colours
Vivid entertainment



Smells
Food/Drink
Nature
Sunscreen

Global Kitchen

The Global Kitchen will be located behind the Ferntree Gully Community Arts Centre.

It will be open and sizzling daily from 10am to 5pm.

Chefs and local cultural cooks will demonstrate culinary delights from across the globe, with local cultural cooks sharing their passions, and local chefs sharing their skills.

Chairs with backrests will be available.

All tastings
are
FREE!



Sensory Guide

Knox Festival 2020



Feel
Shared personal space
Weather



Sounds
Amplified voices
Cooking sounds
Festival sounds
People
Wrappers crinkling



Smells
Food/Drink
Sunscreen

Basketball Half Court

A fun-filled basketball half court will feature alongside Event Control.

It will include 3 x 3 competitions, shoot outs and giveaways.

It will also highlight player appearances thanks to our friends at the Deakin Melbourne Boomers and MSF Sports.



Sensory Guide

Knox
Festival 2020



Feel
Faster heartrate
Increased body temperature
Shared personal space
Weather



Sounds
Applause
Balls bouncing
Crowd cheering
Nature
Whistles



Sights
People
Sporting activity



Smells
Deodorant
People
Sunscreen

Community Stage

A Community Stage will be located in the centre of the festival.

Performances will start daily at 10am and finish at 5pm.

This stage bursts with a colourful program of a range of local multicultural performances, big bands, energetic dance troupes and more.



Sensory Guide

Knox Festival 2020



Feel
Shared personal space
Weather



Sounds
Announcements
Applause
Crowd cheering
Entertainment (loud)
People



Sights
Bright flashing lights
Ride movement
Vivid entertainment



Smells
Food/Drink
Nature
Sunscreen

Ocean Mysteries

Ocean Mysteries is located at the heart of the festival. It includes a giant Knox Festival sandpit and colourful sea creatures and mysterious characters.

Parents can sit back and relax whilst keeping a watchful eye on children playing in the sandpit.



Sensory Guide

Knox Festival 2020



Feel
Change in ground surfaces
Sand
Shared personal space
Weather



Sounds
Announcements
Applause
Children playing
Entertainment
Music
People



Sights
Entertainment
Glare
People
Sandpit



Smells
Nature
Sunscreen

Other Programs

Other programs on offer include:

- Market Stalls
- Kids Cooking and Composting
- Come and Try
- Community Sites
- Get Creative
- Eastern Regional Libraries
- The Sustainability Hub
- Youth Hub



Saturday Evening Twilight Program

A Saturday evening twilight program will be featured on the Canopy Stage. It will be located in the Food Court area.

Starting from 5:00pm to 9:00pm on Saturday, stay for dinner, music, amusements and to watch the sun set over the Canopy Stage.

Performances will include live funk, rockabilly and calypso inspired bands. Patrons are welcome to enjoy the bouncy beats combined with burgers and burritos from the Food Court Treats as the sun sets over Knox.

Download the Knox Festival Stage Programs [here](#) for all three stages.



Sensory Guide

Knox
Festival 2020



Feel
Shared personal space
Weather



Sounds
Announcements
Applause
Crowd cheering
Entertainment (loud)
People



Sights
Bright flashing lights
Crowd movement
Vivid entertainment



Smells
Food/Drink
Nature
Sunscreen

Safety



- Varied terrain throughout including grass, concrete, accessible paved and gravel pathways with some small embankments on surrounding areas.
- FTG Community Arts Centre glass, automated entry doors with wide, solid beam at 860mm to 1000mm AFFL.
- FTG Community Arts Centre with TGSi and handrail on access ramps.
- Additional lighting provided in the evening.
- Event Control with TGSi and handrails on access ramp at front.
- Event Control steps with handrail.
- Protruding objects on pathways including wheelie bins (green) as well as guide ropes and anchors situated around ALL marquees.
- Overhead hazards may include moving rides, overhanging branches or decorations.
- Cables may extend across ground surfaces (appropriate cable trays will be provided).
- Available signage for wet floors may be displayed.
- Accessible water station available.
- If first aid is required, please see a St. John Ambulance Australia (Victoria) first aid attendee.
- Security will be on site. Emergency services will be on site as required.
- Children must be supervised at all times.
- Alcohol and Drug Free event.
- All council event staff have with Working with Children's Checks.
- In the event of an emergency, emergency services and event wardens will help and direct visitors. If there is to be an evacuation, visitors will be directed to the nearest exit and designated assembly area.

